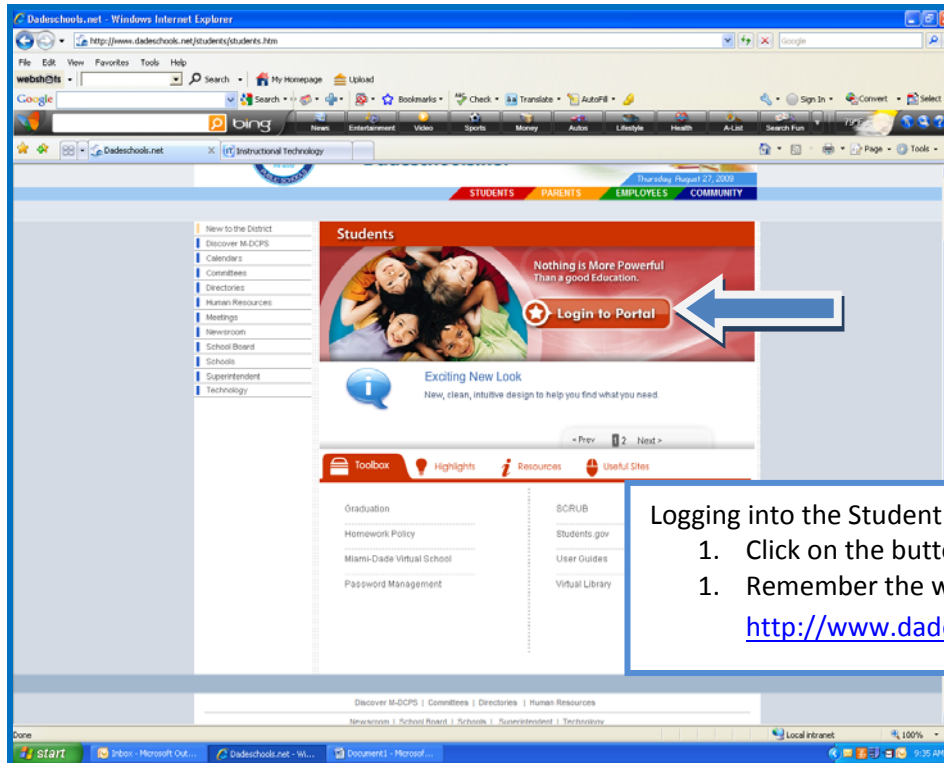
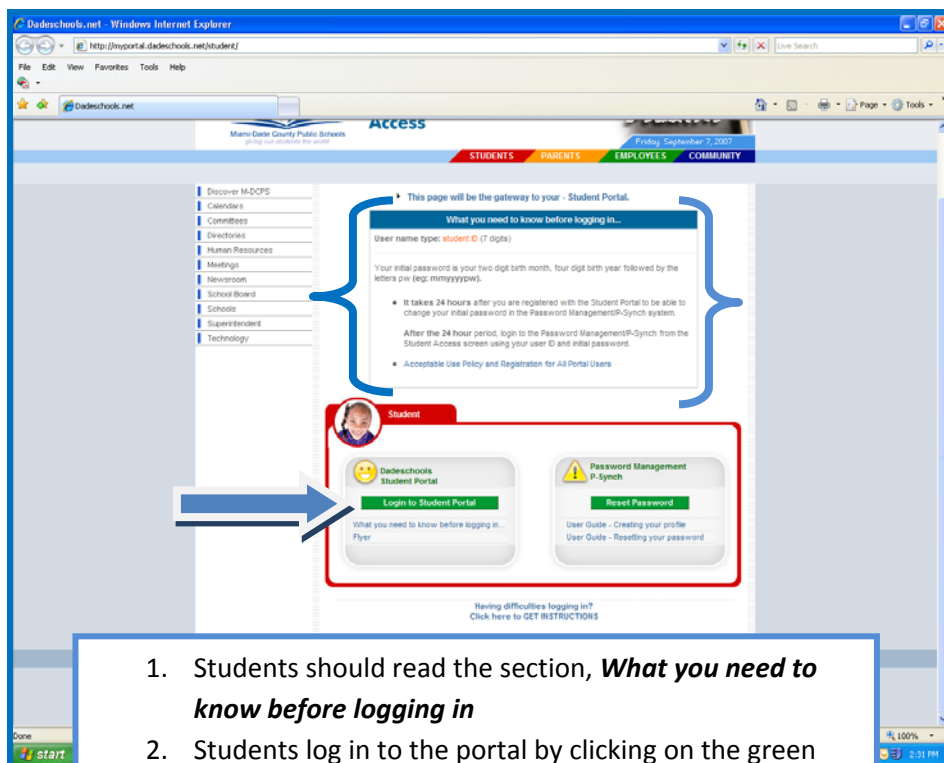


# Accessing e-textbooks via the Student Portal



Logging into the Student Portal:

1. Click on the button labeled **Login to Portal**
1. Remember the website for the student portal is <http://www.dadeschools.net/students/students.htm>



1. Students should read the section, **What you need to know before logging in**
2. Students log in to the portal by clicking on the green bar labeled **Login to Student Portal**

# Accessing e-textbooks via the Student Portal

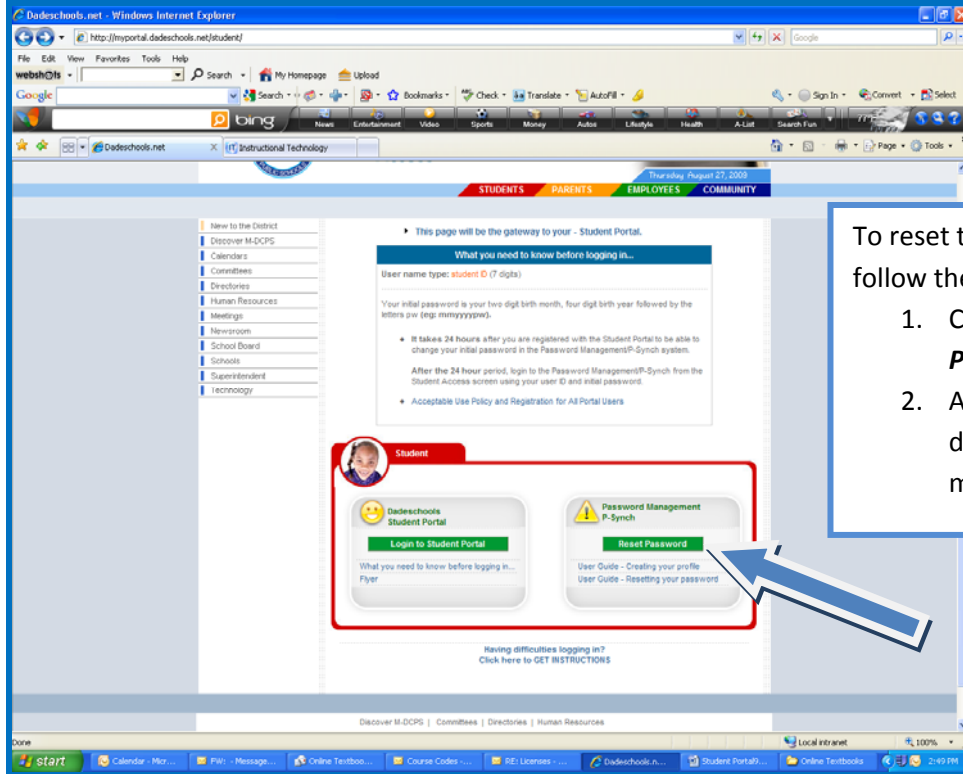
The top screenshot shows the Dadeschools.net Student Portal login page. A red box highlights the 'Login to Student Portal' and 'Reset Password' buttons. A blue oval highlights the link 'Having difficulties logging in? Click here to GET INSTRUCTIONS'.

The bottom screenshot shows the same page with a 'Windows XP / Internet Explorer Browser' dialog box open for login. The dialog box prompts for 'User Name' and 'Password'. Below the dialog box, there are instructions for Step 1 and Step 2. A red note states: 'Note: You may be asked multiple times to enter username and password.' A large 'Sample' watermark is overlaid on the page.

If students experience problems logging into the portal, they can get assistance as follows:

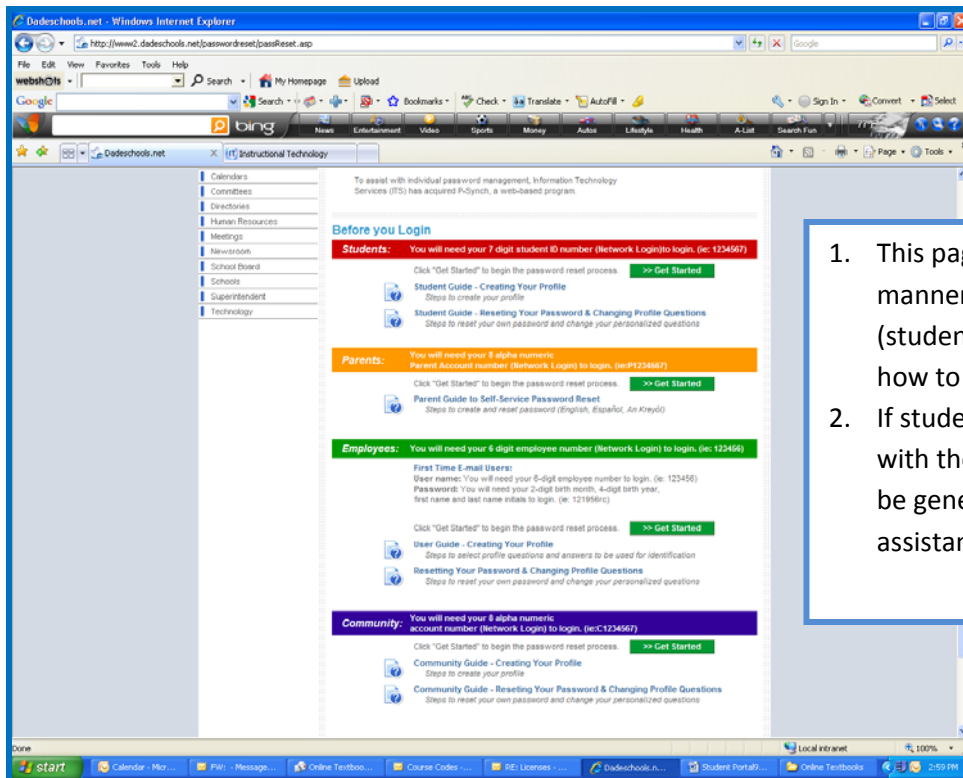
1. They can click on the words, **Having difficulties logging in? Click here to GET INSTRUCTIONS**
2. A sample box will appear demonstrating the steps students must use to log into the portal.

# Accessing e-textbooks via the Student Portal



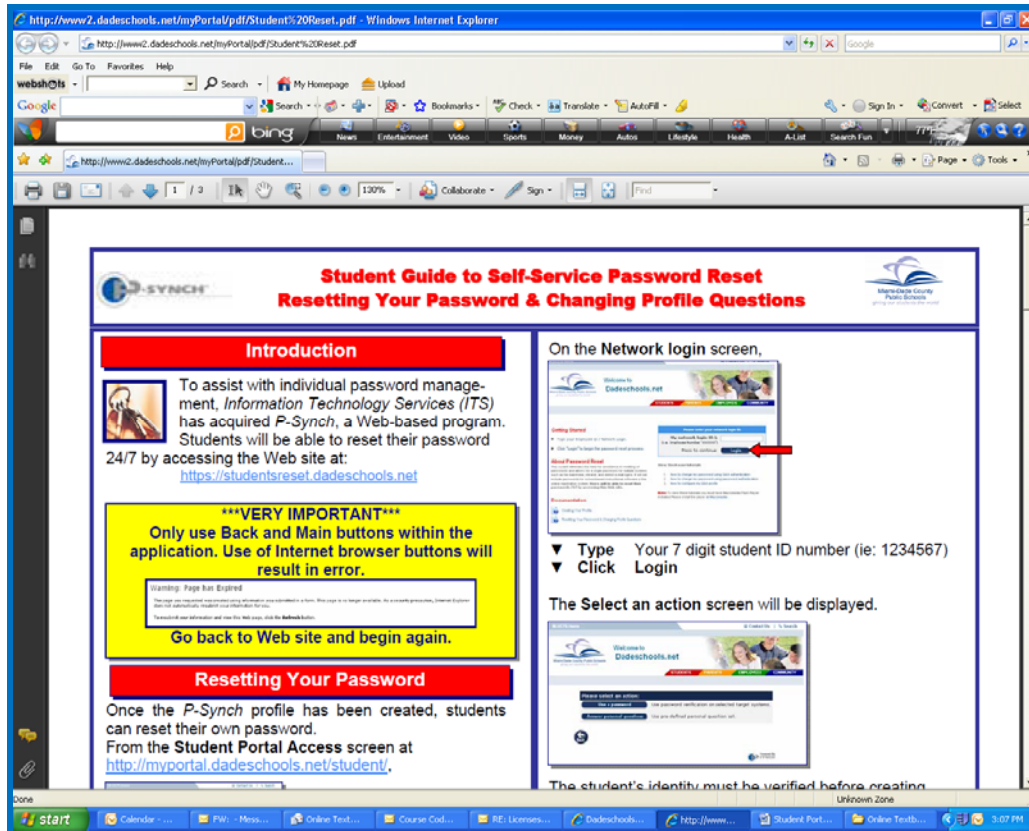
To reset their passwords students must follow these steps:

1. Click on the green bar labeled **Reset Password**
2. A sample box will appear demonstrating the steps students must use to log into the portal.



1. This page provides information in the manner of user guides to all users (students, parents, teachers) describing how to reset their passwords.
2. If students continue to have difficulty with their passwords, a heat ticket is to be generated in order to receive assistance from ITS

# Accessing e-textbooks via the Student Portal



Here is a sample of what one of the user guides looks like. As you can see it is very detailed and provides screen shots showing the students how to complete the steps.

Should students continue to experience problems resetting their passwords, they must contact their schools. At this point, someone at the school needs to complete a Heat Ticket in order for ITS to provide additional assistance to the student.