

SENIOR PARENT NIGHT



***WEDNESDAY, SEPTEMBER 28,
2011***

7:00 P.M.

Welcome and Introductions

Bienvenida y Presentaciones

Mr. Carlos Diaz, Principal

Mr. Michael Sell, Assistant Principal

Ms. Ana Valdes, Assistant Principal

**Mrs. Lisset Vazquez-Rios, Assistant
Principal**

Student Services

Departamento de Servicios para Estudiantes

Mrs. Patty Fleri

Student Services Chairperson

- **Graduation Requirements**
- **College Assistance**
- **Financial Aide**
- **College Fair**

GRADUATION REQUIREMENTS

Requisitos de Graduación

- 4 ENGLISH (Inglés)
- 4 MATH (Matemáticas)
- 3 SCIENCE (Ciencias)
- 3 SOCIAL STUDIES (Estudios Sociales)
- 1 FINE ART (Bellas Artes)
- ½ PERSONAL FITNESS (Salud Personal)
- ½ PHYSICAL EDUCATION (Educación Física)
- 8 ELECTIVE CLASSES (Clases Electivas)
- 24 CREDITS TOTAL (Creditos Total)

ADDITIONAL GRADUATION REQUIREMENTS

Requisitos adicionales de Graduación

- **2.0 GPA** (2.0 grado promedio)
- **PASSING SCORE ON FCAT R/M**
(calificación aprobatoria en el FCAT)
- **20 HOURS OF COMMUNITY
SERVICE** (20 horas de servicio comunitario)

CAP

College Assistance Program



Mrs. Cuevas, CAP Advisor
274-0181 ext 2258

Options AFTER High School

Opciones Post Secundaria

- College / University
- Vocational / Technical
- Military



Selecting a College or University:

Selección de Universidad

There are over 3,000 colleges and universities in the United States

Hay mas de 3.000 universidades y colegios en los estados unidos

Keep the following in mind . . .

Mantenga en mente lo siguiente . . .

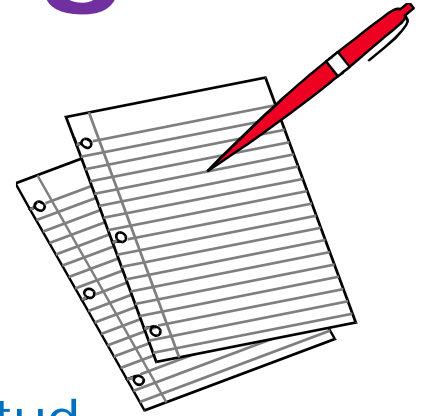
- **Four- year or two-year college/university** Universidades/colegios de dos o quatro años)
- **Location. Close to home or far away?** Ubicación. Cerca de casa o lejos.
- **Size - Under 3,000 students or over 30,000 students.** Tamaño. La cantidad de alumnos.
- **Private or public institutions.** Universidad pública o privada.
- **Programs of study offered.** Programas de estudio ofrecidos.
- **Sports and extracurricular activities available.** Deportes o actividades que se ofrecen.
- **Cost. Do not exclude any choice because** Costo. No excluya debido al alto costo.
of high cost.

(Sometimes expensive schools can afford to give you more aid).

(A veces las escuelas caras pueden darle más ayuda).

Applying To College

Aplicar a la Universidad



College Entrance Exams

Exámenes de ingreso a la universidad

- **Application Process** Proceso de solicitud
 - **Application** Aplicación
 - **Transcript** : electronic or hard copy Transcripción
 - **Letters of recommendation** Las cartas de recomendación
 - **Essay** Ensayo
 - **Application fee** Costo de aplicación
 - **Copy of required Documentation** documentación requerida
- **Scholarships** Becas
- **Financial Aid** Ayuda financiera

Application Deadlines

Plazos de solicitud

- Florida State University October 2010
- University of Florida November 2010
- Florida International University December 2010
- University of Central Florida December 2010
- University of South Florida December 2010

IMPORTANT! Universities will not accept late applications

(IMPORTANTE: Las universidades no aceptaran solicitudes tardes)



College Entrance Exams:

What are SAT and ACT tests?

¿Que son pruebas de SAT y ACT?

These tests are used by colleges and universities nationwide to assess an applicant's aptitude for college-level work.

Estas son las pruebas utilizadas por los colegios e universidades a nivel nacional para evaluar la aptitud de un solicitante a nivel universitario.

ACT

- www.actstudent.org

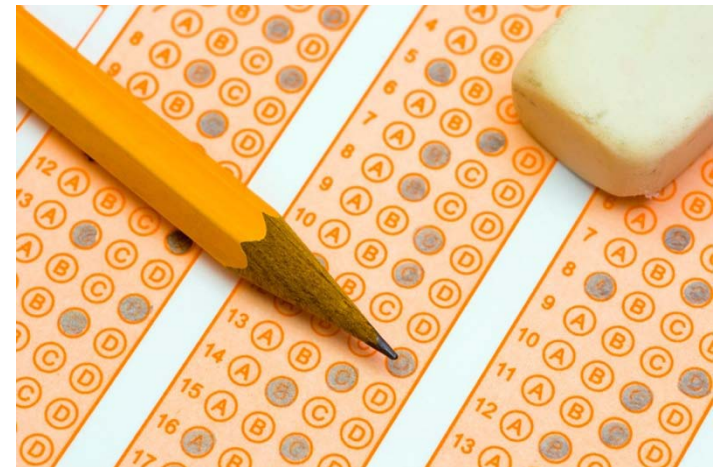
SAT

- www.collegeboard.com

CPT

(MDC Entrance Exam)

- www.mdc.edu



NCAA Clearing House Form



Prior to official visits, or scholarship offerings, athletes applying to Division I or II schools MUST:

(Solamente para los atletas)

- Register with the **NCAA Eligibility Center. YOU MUST REGISTER BEFORE DECEMBER.** Matricularse con el NCAA antes de diciembre.
- **Must take either the ACT or SAT tests.** Debe tomar el ACT o SAT

(Please see Ms. Sotorrio, in the Athletic Office for more information and assistance) **Para obtener más información, consulte a la Sra. Sotorrio en la oficina de atletas.**

Estimated Budget

State Universities

Universidades Publicas

Tuition Matricula:	\$3,200
Books Libros:	\$ 850
Room/Board Alojamiento y Comida	\$5,700
Personal Gastos personales	\$1,000

Private (UM)

Universidades Privadas

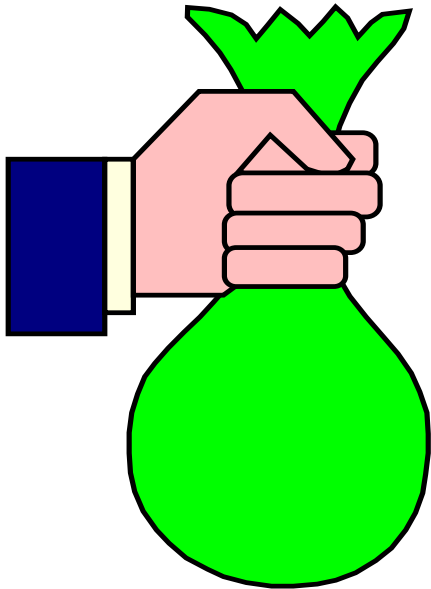
\$28,000
\$ 850
\$ 7,000
\$ 1,000

Total **\$10,750**

\$36,850

Financial Aid

Ayuda Financiera



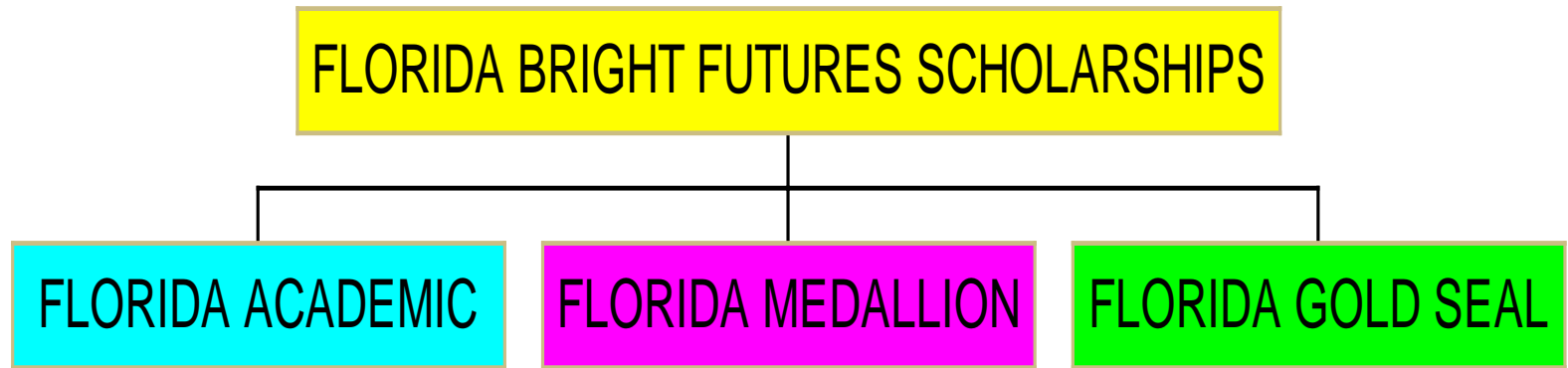
- **Grants** (Beca) - money you don't pay back (dinero que no tiene que devolver)
- **Loans** (Prèstamo) - are borrowed funds. Money must be repaid with interest. (dinero que se pide prestado y debe ser devuelto con intereses).
- **Work study** (Estudio del Trabajo) - Work at college/university and get paid. Trabajo en la universidad que se les paga.

Federal Financial Aid (FAFSA)



- Free Application for Federal Student Aid
- Solicitud de ayuda federal para estudiantes.
- Available January 1st of senior year
- Disponible el primero de enero del 12 grado.
- Current Family Income Tax information needed to complete form.
- Los ingresos corrientes de la familia son necesarios para completar el formulario.
- Application available online at www.fafsa.ed.gov
- Solicitud disponible en www.fafsa.ed.gov

Florida Bright Futures



For more information visit
www.MyFloridaEducation.com/brfuture
or call 1-888-827-2004

College Fair

Feria Universitaria

November 2, 2010

Main Cafeteria

6:00 p.m. – 8:00 p.m.

Florida public and private universities/colleges
And out-of-state universities/colleges will be here.

Don't miss out on this valuable experience!

*Universidades privadas, publicas y fuera del estado
estaran aqui. No se pierda esta oportunidad.*



Annie Diaz
Activities Director
Directora de Actividades

SENIOR EVENTS

EVENT	DATE	TIME	PRICE	LOCATION
• YEARBOOK SALES	SEPT – MAY	LUNCH	VARIES	MAIN LOBBY/509
• SENIOR PICTURES	thru early OCT	N/A	VARIES	FOX-MAR
• SENIOR PARENT NIGHT	SEPT. 28, 2011	7:00 PM	N/A	SW AUDITORIUM
• SENIOR LUAU (SPECIAL INVITE)	OCT 7, 2011	TBA	N/A	GYM
• HOMECOMING DANCE	OCT 21, 2011	8:00 P.M	\$50-\$60	SIGNATURE GARDENS
• SENIOR TRIP	NOV 19, 2011	ALL DAY	\$85	MAGIC KINGDOM
• SENIOR COLLEGE TOUR	DEC 1 – 3, 2011	ALL	TBA	FLORIDA UNIVERSITIES
• CAP & GOWN ORDERS	DECEMBER	VARIES	\$20 - \$25	ENGLISH IV CLASS
• SENIOR PANORAMIC	JAN 13, 2012	8:00 a.m.	VARIES	GYM
• GRAD ANNOUNCEMENTS	JAN 13, 2012	8:00 a.m.	VARIES	GYM
• SENIOR BREAKFAST	JAN. 20, 2012	ALL DAY	\$35	HILTON AIRPORT
• SENIOR PICNIC	MAR 29, 2012	ALL DAY	\$35	TROPICAL
• SENIOR SPIRIT WEEK	APR 23 – 27, 2012	ALL DAY	N/A	SOUTHWEST
• SENIOR PEP RALLY	APR 27 2012	LAST BLOCK	N/A	GYM
• GRADBASH	APR 28, 2011	OVERNIGHT	\$110 - \$120	UNIVERSAL /ISLANDS
• PROM	MAY 4, 2011	8:00 PM	\$80 - \$90	INTERCONTINENTAL
• GRADUATION	JUNE	TBA	N/A	TBA

PLEASE NOTE THAT ALL ACTIVITIES AND PRICES ARE SUBJECT TO CHANGE WITHOUT NOTICE. STUDENTS MUST MAINTAIN ACCEPTABLE ATTENDANCE IN ACCORDANCE WITH THE SOUTHWEST ATTENDANCE POLICY (SEE BELOW).

STUDENTS WHO WISH TO PARTICIPATE IN EXTRACURRICULAR ACTIVITIES INCLUDING: FIELDTRIPS, ATHLETIC COMPETITIONS, CLUB COMPETITIONS, DANCES, ETC. MUST NOT ACCUMULATE 10 OR MORE DAYS ABSENT, 6 OR MORE DAYS SUSPENDED (INDOOR/OUTDOOR) AND/OR 20 DAYS TARDY/EXCUSED EARLY.

For updates: <http://sweagles.dadeschools.net>



***BECOME A FAN ON FACEBOOK @ www.facebook.com/SouthwestMiamiHigh
AND ON TWITTER @ www.twitter.com/SouthwestEagles***

CLASS OF 2012

Activities Attendance Policy

Students who have accumulated:

- **10** or more absences,
- **20** or more days tardy/days excused early,
- **6** or more days suspended

WILL NOT be permitted to participate or attend extra-curricular activities.

Los estudiantes que tienen:

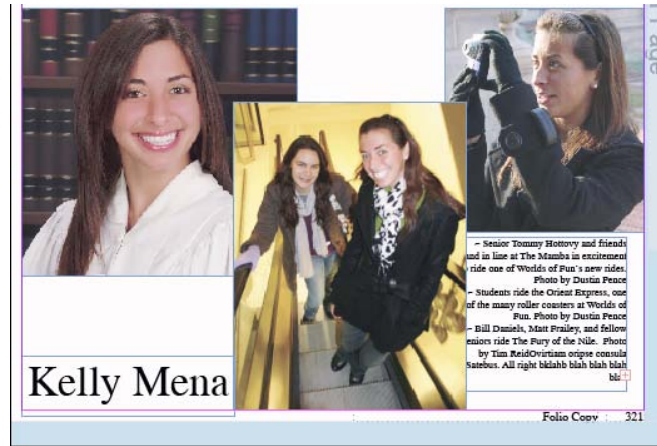
- **10 o más ausencias**
- **20 tardanzas o salidas temprano**
- **6 días de suspensión**

No podrán participar en las actividades.

SENIOR ADS ON SALE NOW!

Full-page \$145

Half-page \$75



Purchase yearbooks/ads in the auditorium lobby.

STAY CONNECTED

- ***For updates:***
<http://sweagles.dadeschools.net>
- ***FOLLOW US ON FACEBOOK @
SOUTHWEST MIAMI SENIOR HIGH
SCHOOL***
- ***AND ON TWITTER @
www.twitter.com/SouthwestEagles***

HEALTH INFORMATION

Información de Salud

- Nurses will be available in the lobby of the auditorium to answer questions.
- Las enfermeras estarán disponibles en el vestíbulo para contestar preguntas.
 - Flu shots
 - Vaccinations

Clinic Staff:

Cindy Harrah

Jessenia Herran